

Project 4 Example - 11th St BOMA

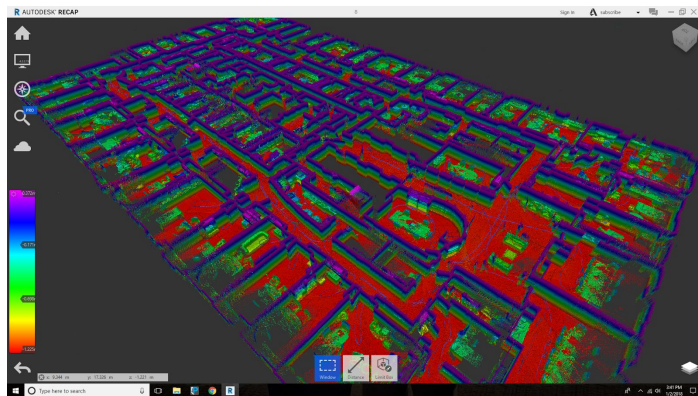
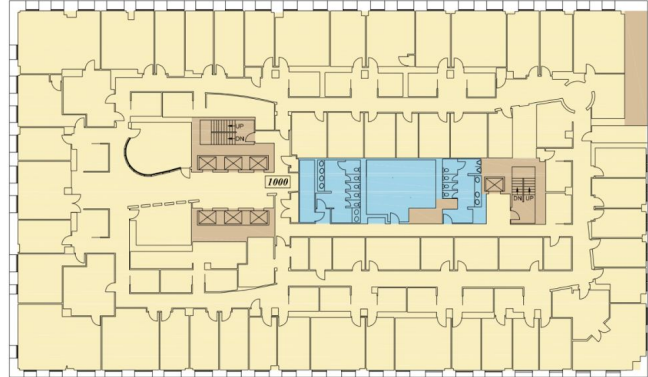
Project Name: 11th St BOMA

Project Size: 500,000 sq ft

Deliverables: BOMA Calculations, Floor Plans, Virtual Tours, 3D Point Cloud, 360 Imagery

Field Time: 12 hours

Delivery Time: 4 weeks



Project Overview: Large class A office space with high profile tenants and had to be documented after hours and fast! No chance of repeat visits with all the initial coordination either. Scanned with photos in 12 hours of offices and parking levels. Comprehensive floor plans, virtual tour, and BOMA calculations of the entire space completed in 4 weeks after data capture.

Benefits of BIM4Sites Approach:

- Unmatched field collection speed
- Complete 3D documentation
- Bonus: 360 Imagery + Virtual Tour help with BOMA calculations
- One site visit. No revisits.
- Accurate and detailed drawings
- Fast turnaround
- Low cost

