

Project 4 Example - Church Plans

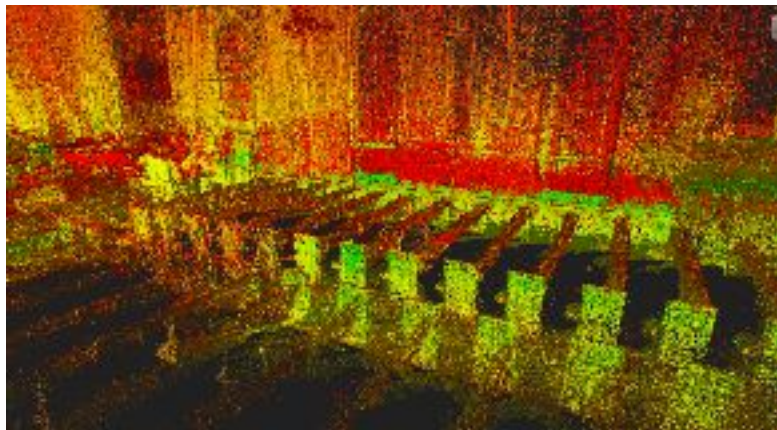
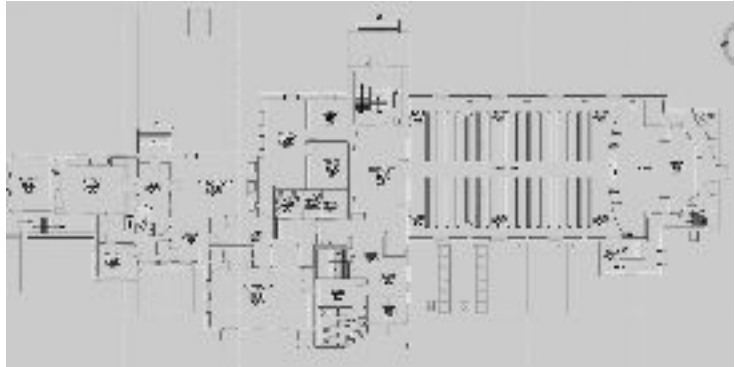
Project Name: Church Plans

Project Size: 24,000 sq ft

Deliverables: Floor Plans, Virtual Tours, 3D Point Cloud, 360 Imagery

Field Time: 1 hour

Delivery Time: 2 weeks



Project Overview: Even though the project might call for straightforward drawings, the measuring might be complex! Being able to capture multiple size rooms with different features quickly and accurately (with photos) leads to a better delivery schedule and better quality deliverables. A small 3 storey, but tricky church like this one is a perfect example.

Benefits of BIM4Sites Approach:

- Unmatched field collection speed
- Complete site documentation
- Bonus: 360 Imagery + Virtual Tour
- One site visit. No revisits.
- Accurate and detailed drawings
- Fast turnaround
- Low cost

