

Project 4 Example - Wisconsin Ave BOMA

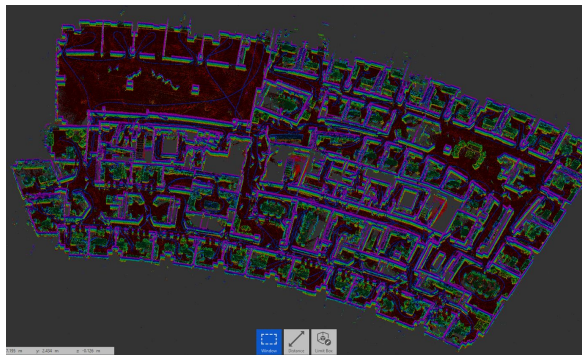
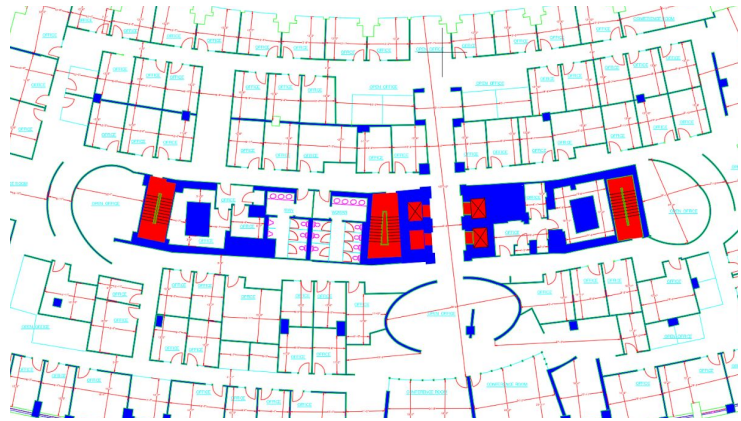
Project Name: Wisconsin Ave BOMA

Project Size: 350,000 sq ft

Deliverables: BOMA Calculations, Floor Plans, Virtual Tours, 3D Point Cloud, 360 Imagery

Field Time: 12 hours

Delivery Time: 4 weeks



Project Overview: Large class A office space with high profile tenants and had to be documented after hours and fast! A difficult building with many curved walls and no chance of repeat visits with all the initial coordination either. Scanned with photos in 8 hours of offices and parking levels. Comprehensive floor plans, virtual tour, and BOMA calculations of the entire space completed in 4 weeks after data capture.

Benefits of BIM4Sites Approach:

- Unmatched field collection speed
- Complete 3D documentation
- Bonus: 360 Imagery + Virtual Tour help with BOMA calculations
- One site visit. No revisits.
- Accurate and detailed drawings
- Fast turnaround
- Low cost

